

**10GHZ SMA MALE TO REVERSE POLARITY SMA FEMALE
ADAPTER
P/NO.STI01-0152**



SPECIFICATION

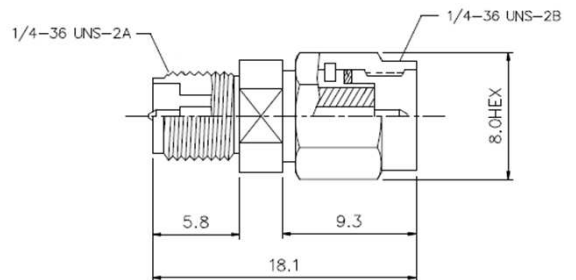
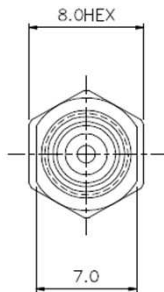
Frequency	DC-10GHz
VSWR:	1.1:1(Max.)
Impedance:	50Ohm
Durability:	500 Cycles
Temperature:	-65~155℃

MATERIAL LIST

Part	Material	Plated
Shell	Brass	Gold
Gasket	Silicon	
C-Ring	Beryllium Copper	Gold
Insulator	Teflon	
Center Pin	Beryllium Copper	Gold
Insulator	Teflon	
Body	Brass	Gold

OUTLINE DRAWING

Unit:mm



TESTING DATA (100% S-PARAMETER TESTED)

